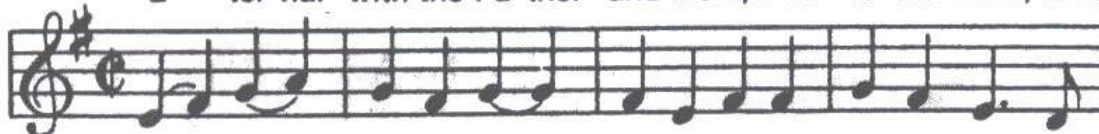


ΤΟΝ ΣΥΝΑΝΑΡΧΟΝ ΛΟΓΟΝ THE ETERNAL WORD

ΗΧΟΣ ΠΛ. Α'
FIRST PLAGAL TONE

E - ter-nal with the Fa-ther and the Spi-rit is the Word, Who



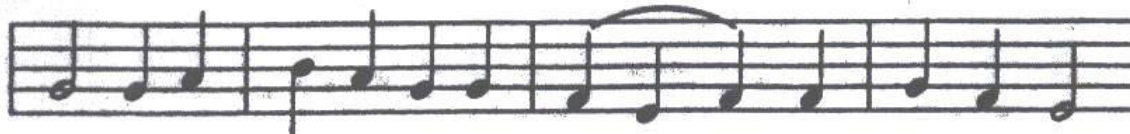
Τὸν συ-νά - ναρ-χον Λό - γον Πα-τρι καὶ Πνεύ-μα - τι τὸν
Ton si - na - nar-hon Lo - gon Pa - tri ke Pnev-ma - ti ton

of a Vir-gin was be - got - ten for our sal - va - -



ἐκ Παρ-θέ - νου τεχ - θέν - τα εἰς σω-τη - ρί - αν ἡ -
ek Par-the - nu tek - then - ta is so - ti - ri - an i -

tion. As the faith-ful we both praise and wor-ship Him,



μῶν ἁ - νωμ - νή - σω-μεν πῖ - σι - καὶ προ - σκυ - νή - σω - μεν
mon a - nim - ni - so-men pis - ti ke pro - ski - ni - so-men

for in the flesh did He con - sent to as - cend un-to the Cross, and



ὅ - τι ἦν ὁ - ὄ - κη - σε σαρ - κὶ ἄ - νελ - θεῖν ἐν τῷ σταυ - ρῷ καὶ
o - ti i - tho - ki - se sar - ki a - nel - thin en to stav - ro ke

death did He en-dure - and He raised un-to life - the -



θά - να-τον ὁ - πο-μει - ναι καὶ ἐ - γεί-ραι τοὺς τεθ-νε - ῶ
tha - na-ton i - po - mi - ne ke e - gi - re tus teth-ne - o

dead through His all glo-rious re - sur - rec - - tion



τας ἐν τῇ ἐν δό - ξῳ Ἄ - να - στά-σει Αὐ - τοῦ.
tas en ti en tho - xo a - na - sta - si Af - tu.